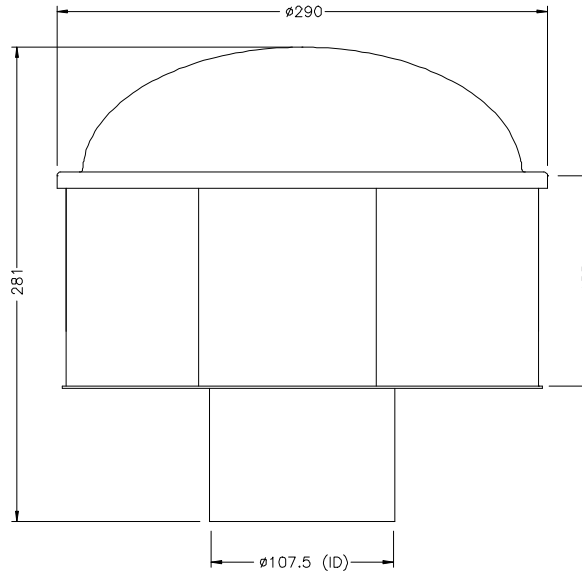


ECOPOWER 100

DATE: 30 December 2009



SPECIFICATIONS:

MATERIAL: Turbine: Aluminium 5005
 Dome: Aluminium 1200
 Brackets, throat & motor shield : 304 Stainless Steel
 Motor housings: Nylon
 Fasteners: Stainless Steel

WEIGHT: 2.05 kg

ELECTRICAL: Electronic Commutating (EC) motor
 Input Voltage (min-max): 6-9 VDC
 Max. running current draw: 1 A
 Max. running power consumption: 9 W
 Specific flow rate (9V @ $\Delta p=0$): 13 m³/hr/W

Characteristic Curves EP100

